



Large scale & small scale PCB's Supporters for **XY table** (JV-002)

Introduction

PCB's warping, wrap and sag – Lead Free applications require high range of temperature for reworking or repair, it might be sag or warp during the process and it is particularly noticeable especially in thin PCBs such as those used in mobile applications, portable game consoles and the thin mother boards for Laptop.

Jovy™ systems provide two kinds of supporters to be used with the X-Y table JV-002 which supports the PCB during the rework process; it is recommended even in leaded applications, and to protect the PCBs from damage during reworking with high temperature.

Product descriptions:

Material

Aluminum for small scale supporter JV-SSU and stainless steel for the Large scale supporter JV-LSU.

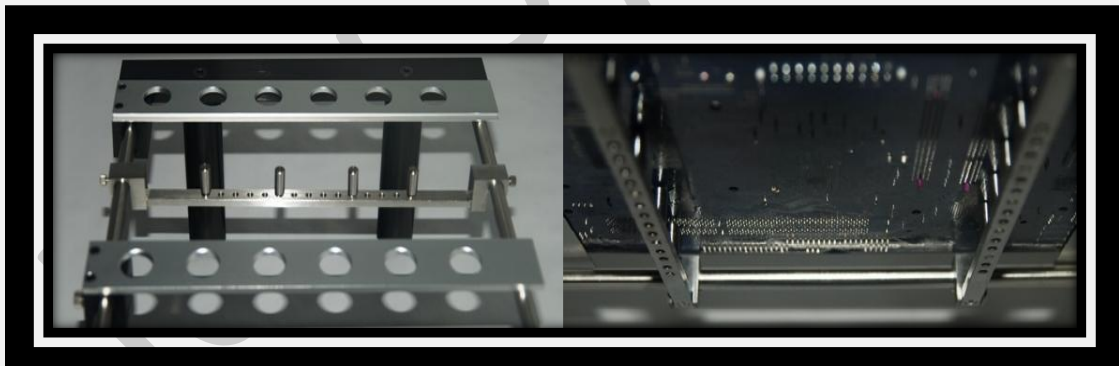
Product type

In two different shapes, one – Large scale supporter JV-LSU to be support the large boards from the bottom side with four main pins hold up the PCB to be placed away from any of the board components as shown in figure (1), other – small scale supporter JV-SSU holding the boards from any of its edges with the supporter hinge to be used for or small PCB as shown in figure (2). Irregular PCB shapes could need both types of supporters together as shown in figure (3).

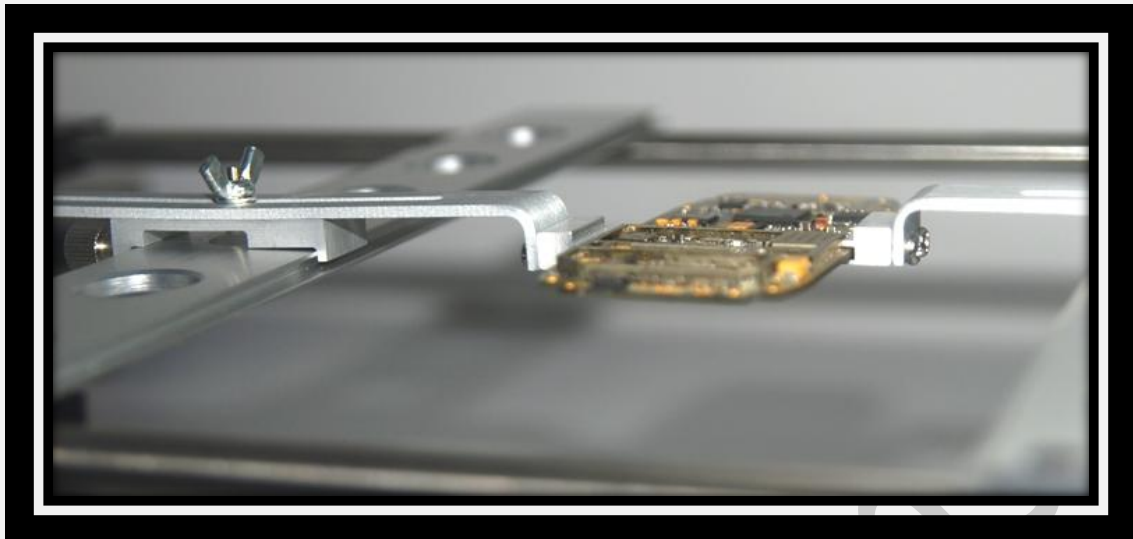
Fixture

- For JV-LSU, please refer to figure (4).
- For JV-SSU, please refer to figure (5).

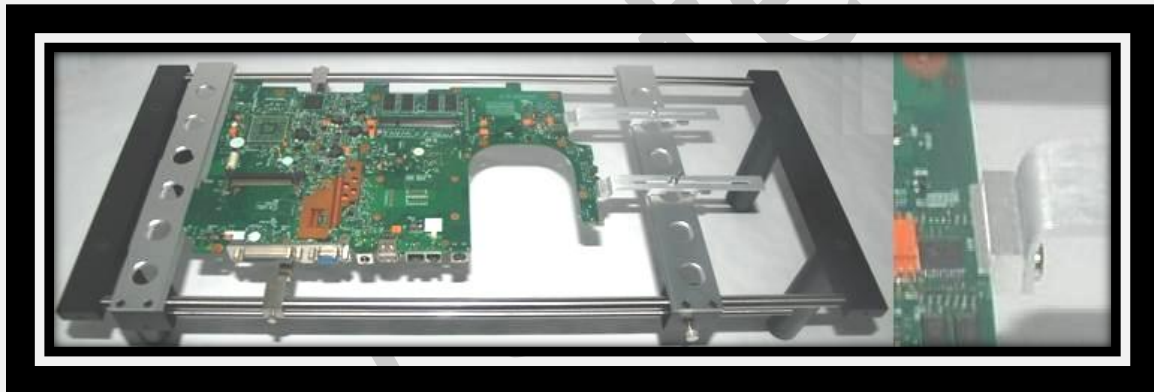
Installation:



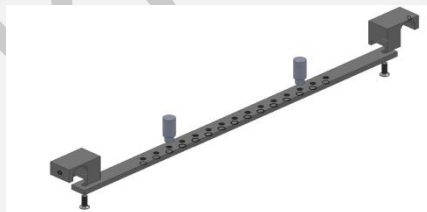
Large scale Supporter JV-LSU [Figure- 1]



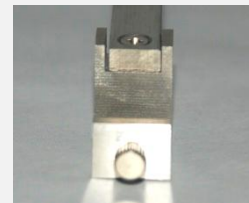
Small scale Supporter JV-SSU [Figure- 2]



[Figure- 3]

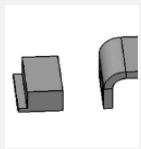


Assemble the base with the two hinges



Tighten the stopper screw which hold the base with X/Y table axis

[Figure – 4]



Assemble the Hinge with the Rod



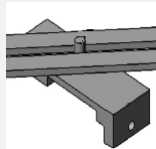
Tighten the two screws for the Hinge



Prepare the base to be attached with the Rod



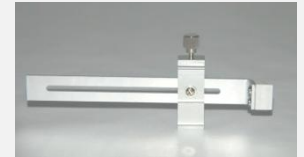
Use the base screw to attach the base



Assemble the base and put the washer



Tighten the screw with the butterfly Nut



Tighten the supporter stopper in the base, to be fixed later with the X/Y table axis.

[Figure – 5]

Application :

The supporters for JV-002 are highly recommended to be used during rework process and in the applications according the below table:

Supporter Type	Mobile phone	PC Mother Boards	Laptop Mother Boards	Game console	Small PCB's (≥ 60mm width)	Large PCB's in irregular shapes
Large scale (JV-LSU)	x	2	2	2	x	2
Small scale (JV-SSU)	4	2	4	1	4	3